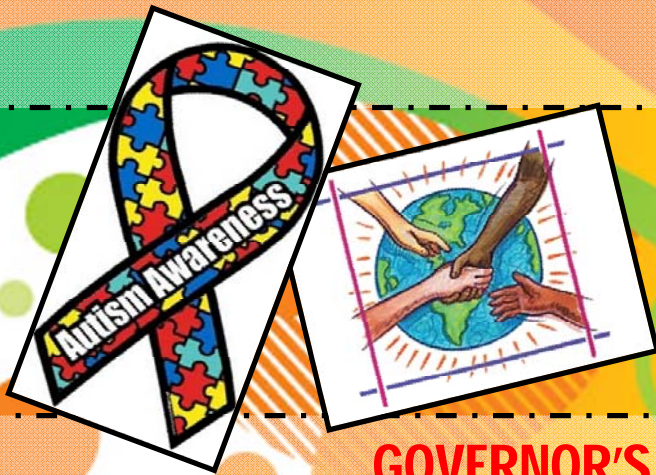


# KIWIN'S WEEK

**FEBRUARY 8<sup>th</sup> – February 14<sup>th</sup>**

**WHAT: Help your local community!**

- Volunteer at a soup kitchen
- Help at a homeless shelter
- Work at a food bank
- Donate clothes and shoes to your local Salvation Arm



2.8.10 Membership **MONDAY**  
2.9.10 Tutoring **TUESDAY**  
2.10.10 Welcoming **WEDNESDAY**  
2.11.10 Thrifty **THURSDAY**  
2.12.10 Friendship **FRIDAY**  
2.13.10 Sporty **SATURDAY**  
2.14.10 Salutations **SUNDAY**

## **GOVERNOR'S PROJECT BUILD** **Building Understanding In Learning Disabilities**

This project focuses on the education of many young children that have learning disabilities in the world. Project BUILD emphasize on aiding and supporting the ones that have difficulty in learning

**Help out your local community by:**

- Helping at your school's special education program
- Talk and get to know them!

# BUILD